



## **Table of Contents**

<b>READ FIRST Important</b>	2
Package Contents	2
Introduction	2
μDAC USB Configuration (MAC)	3-4
μDAC USB Configuration (PC)	4-6
μDAC S/PDIF Configuration	7
Troubleshooting	7
Warranty	8-9
Service	10
Specifications	11

### **Important**

Please read the entire manual before connecting this product to any existing components or power. This manual contains detailed information regarding the design, operation and features of the Wyred 4 Sound μDAC. Damage due to misuse or improperly following instructions will not be covered under warranty. See “Warranty” for an in depth understanding of the warranty restrictions regarding this product.

### **Package Contents**

- 1 - Manual/Driver disk
- 1 - USB Cable (Connector type: A to B)
- 1 - USB power adapter
- 1 - Unit

### **Introduction**

Thank you for purchasing your new piece of Wyred 4 Sound gear. This ultra-compact unit has a variety of features that would be expected in a chassis well over double the size! There are two S/PDIF inputs which support 24 bit 192 kHz signals as well as an asynchronous USB input for computer streaming. Any of these inputs provide the kind of performance expected from a price tag many times higher. From Internet radio to high resolution streaming this unit will not miss a beat. We have included a ESS DAC to take full advantage of the limited real-estate in this 3.5”x3.5” chassis.

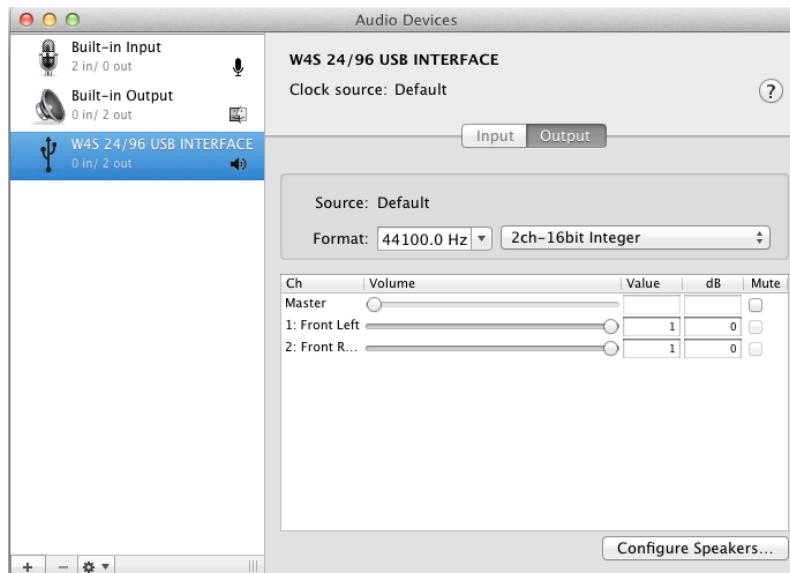
Not only does the μDAC perform well, its soft lines and smooth finish make for a sleek looking product. Made from machined aircraft-grade aluminum with the W4S logo as a lock light (lights up blue when the unit is locked onto a signal!), this unit is very functional yet so simple. This manual contains details regarding the setup of this device in your system so please review it carefully.

## μDAC USB Configuration (MAC)

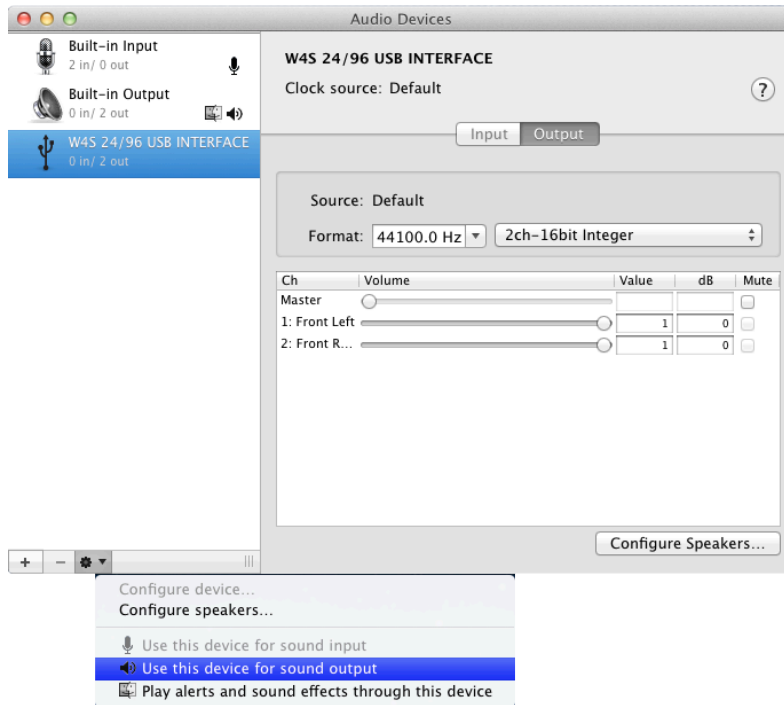
When connecting to Mac computers the USB interface automatically installs the drivers into the operating system. If you are using a PC, drivers are required for asynchronous operation and they are located on this disk. Please refer to the section titled "**μDAC USB Configuration (PC)**" for PC setup instructions. If you are using a Mac please follow these directions.

(Please note: This USB device currently does not support Mac OS 10.5 or earlier)

1. Connect a USB cable from the μDAC to the computer with the computer powered on.
2. **USB Power:** Power up the μDAC by selecting "**USB**" on the **POWER SELECT** three position switch labeled **(DC-OFF-USB)**  
**DC Power:** Connect the power supply to the wall outlet and then the DC jack on the unit. Power up the μDAC by selecting "**DC**" on the **POWER SELECT** three position switch labeled **(DC-OFF-USB)**.
3. Select the "**USB**" input on the **INPUT SELECT** three position switch labeled **(TOS-USB-COAX)**.
4. Connect the RCA outputs to your pre-amp, integrated amp, etc.
5. Once the installation has finished, you may be prompted that the μDAC has completed installation and is ready to use.
6. It is now necessary to select the μDAC as the output device for your computer. Please locate the Audio Midi setup by following this directory: **Click On** Finder----> Applications----> Utilities----> Audio Midi setup.



Once you have reached the Midi setup you will need to select the "**W4S 24/96 USB INTERFACE**" as the default output device and apply the setting. To apply the selection click on the device listed above, followed by clicking the "**gear**" icon located at the bottom of the window which is previewed on the next page.



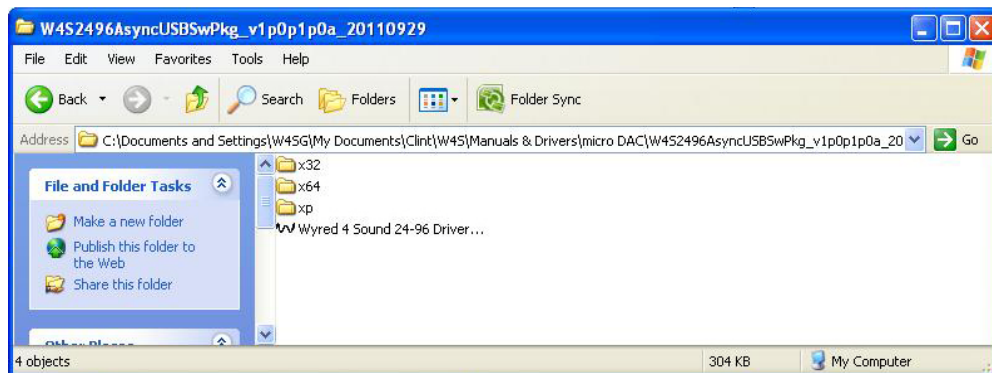
When you click the gear icon a pop up window will be displayed, click on **“Use this device for sound output”** to properly apply the setting.

7. Now you can open your preferred music playback program and find the preferences or options tab. Once you locate the output device, make sure the “24/96 USB Audio Sound” interface is selected. It is not necessary to select the  $\mu$ DAC as the output device in programs such as iTunes, Amarra or BitPerfect.
8. The last step is easy.....Enjoy your music!

### **$\mu$ DAC USB Configuration (PC)**

Please follow these steps when connecting your new unit to a PC computer. Drivers are located on this disk and are also available for download on the Wyred 4 Sound website. The drivers can be accessed directly at this address (<http://www.wyred4sound.com/downloads.html>). The driver package on our website is called “ $\mu$ DAC 24/96 Asynchronous Driver Package and manual”. Please refer to the section above titled **“ $\mu$ DAC USB Configuration (MAC)”** if you will be connecting to a Mac computer.

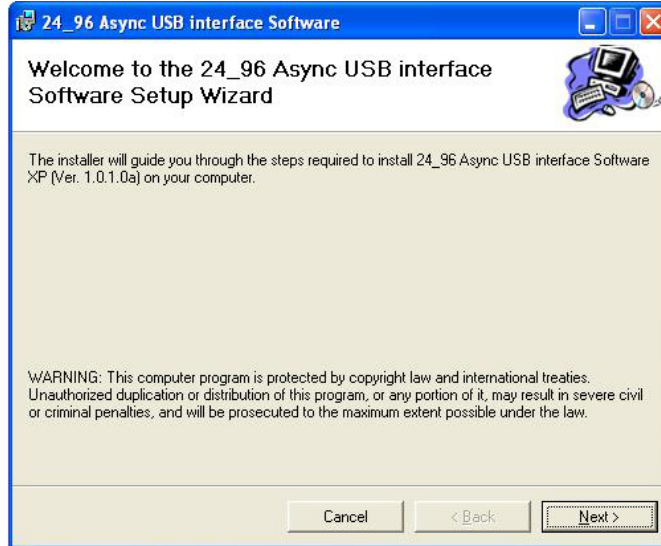
1. Locate the file titled “PC” on this disk and double click **“Wyred 4 Sound 24-96 Driver Install”**.



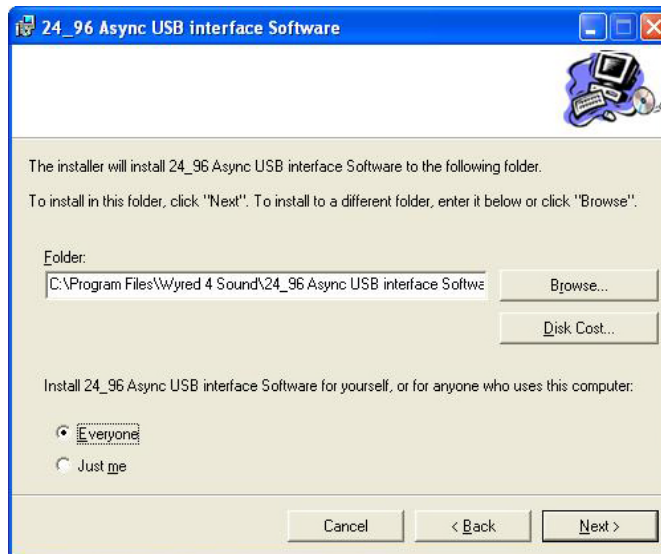
2. Click **“Setup Software”** in the window that pops up.



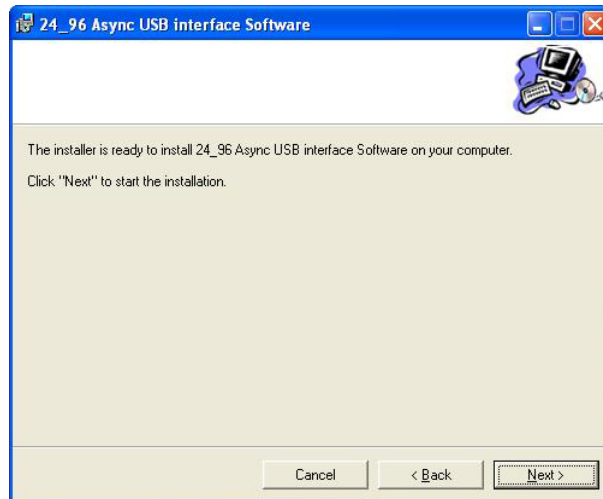
3. Click **“Next”** to proceed with installation.



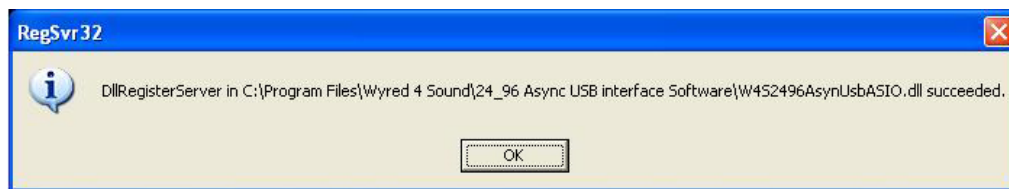
4. On the bottom of the new window, choose whether this should be installed for **“Everyone”** or **“Just me”** and click **“Next”**. (Typically “Everyone” will be the appropriate choice. If you have multiple user profiles on your computer and would prefer the driver to only be available when you are logged in, select “Just me”)



5. Follow all prompts with-in the setup to continue the procedure. (Click “Next” two times) If you are asked to continue with non-Windows “signed” driver, please click “continue installation”.



6. Once the installation has finished, you will see a window called “RegSvr32”, please click “OK”. The installation has completed and the driver is ready to use. It will be necessary to restart the computer for proper operation.



7. Restart the computer after clicking “OK”.
8. Once the computer has finished booting up connect a USB cable from the  $\mu$ DAC to the computer.  
**USB Power:** Power up the  $\mu$ DAC by selecting “USB” on the **POWER SELECT** three position switch labeled **(DC-OFF-USB)**.  
**DC Power:** Connect the power supply to the wall outlet and then the DC jack on the unit. Power up the  $\mu$ DAC by selecting “DC” on the **POWER SELECT** three position switch labeled **(DC-OFF-USB)**.
9. Select the “USB” input on the **INPUT SELECT** three position switch labeled **(TOS-USB-COAX)**.
10. Connect the RCA outputs to your pre-amp, integrated amp, etc.
11. It is now necessary to select the unit as your default output device. Click “Start” at the bottom of your screen and then “Control Panel”
12. **Windows XP:** Click on “Sounds and Audio Devices”  
**Windows Vista & 7:** Click on “Hardware and Sound”
13. **Windows XP:** Click on the “Audio” tab and then the “Default device” drop down menu. Select “24/96 Async USB Audio Sound”.  
**Windows Vista & 7:** Click on “Manage audio devices” and select “SPDIF OUT 24/96 Async USB Audio Device”.

After selecting the  $\mu$ DAC as the output device it may be necessary to select the device in you preferred media player. Please refer to <http://www.wyred4sound.com/faq.html> for a detailed J. River setup guide.

14. The last step is easy.....Enjoy your music!

## **μDAC S/PDIF Configuration**

If you will be using the S/PDIF inputs for the μDAC please follow these directions.

1. **USB Power:** Connect the USB cable to the USB power adapter and plug it into an outlet. Next plug the USB cable into the μDAC and turn it on by selecting “**USB**” on the **POWER SELECT** three position switch labeled (**DC-OFF-USB**).
- DC Power:** Connect the power supply to the wall outlet and then to the DC jack on the unit. Power up the μDAC by selecting “**DC**” on the **POWER SELECT** three position switch labeled (**DC-OFF-USB**).
2. Connect your source to the toslink or coaxial input using the appropriate digital cable.
3. Connect the RCA outputs to your pre-amp, integrated amp, etc.
4. Select the appropriate input on the **INPUT SELECT** three position switch labeled (**TOS-USB-COAX**).
5. Enjoy!

## **Troubleshooting**

### **No sound?**

If you have your input source and speakers connected, and you can't get music to play, check the following. Feel free to test for output at any time during this process if you find and correct a potential problem.

**Always check the position of the volume control in your system before starting to play music. Damage to any equipment due to the volume being set to high is not covered under warranty.**

1. Verify that the **INPUT SELECT** and **POWER SELECT** switches are in the correct position.
2. Check that the unit is powered on and locked onto a signal. This is indicated by the logo being illuminated on top of the unit.
3. If you are using the USB input please be sure that you have installed drivers if necessary and properly selected the device for sound output. (See USB Configuration above)
4. Please be sure that the RCA interconnects are firmly plugged into the μDAC.
5. Verify that your source is in fact playing music. (Indicated by a track timer, or countdown, etc.)
6. Take moment to confirm that your pre-amp has the proper input selected and that the RCAs are plugged firmly into that input.
7. Check the level of your pre-amp to be sure that the setting is sufficient for music to be audible in your system.
8. If possible try testing the RCA interconnects in a known good system configuration.

If you are still experiencing problems and have exhausted your available resources and time please contact the dealer/distributor that you purchased the product from for further assistance.

## Warranty coverage

Wyred 4 Sound's warranty obligations are limited to the terms set forth below:

Wyred 4 Sound, as defined below, warrants this Wyred 4 Sound-branded hardware product against defects in materials and workmanship under normal use for a period of **FIVE (5) YEARS from the date of retail purchase by the original end user purchaser ("Warranty Period")**. If the product has been transferred from the original owner to a second hand owner it has a **ONE (1) YEAR warranty, valid from the original date of purchase by the original owner**. If a hardware defect arises and a valid claim is received within the Warranty Period, at its option, Wyred 4 Sound will either (1) repair the hardware defect at no charge, using new or refurbished replacement parts, or (2) exchange the product with a product that is new or which has been manufactured from new or serviceable used parts and is at least functionally equivalent to the original product. Wyred 4 Sound may option that you replace defective parts with new or refurbished user-installable parts that Wyred 4 Sound provides in fulfillment of its warranty obligation. A replacement product or part, including a user-installable part that has been installed in accordance with instructions provided by Wyred 4 Sound, assumes the remaining warranty of the original product or ninety (90) days from the date of replacement or repair, whichever provides longer coverage for you. When a product or part is exchanged, any replacement item becomes your property and the replaced item becomes Wyred 4 Sound's property. Parts provided by Wyred 4 Sound in fulfillment of its warranty obligation must be used in products for which warranty service is claimed. When a refund is given, the product for which the refund is provided must be returned to Wyred 4 Sound and becomes Wyred 4 Sound's property.

### EXCLUSIONS AND LIMITATIONS

Wyred 4 Sound does not warrant that the operation of the product will be uninterrupted or error-free. Wyred 4 Sound is not responsible for damage arising from failure to follow instructions relating to the product's use. This warranty does not apply: (a) to damage caused by use with non-Wyred 4 Sound products; (b) to damage caused by accident, abuse, misuse, flood, fire, earthquake or other external causes; (c) to damage caused by operating the product outside the permitted or intended uses described by Wyred 4 Sound; (d) to damage caused by service (including upgrades and expansions) performed by anyone who is not a representative of Wyred 4 Sound or a Wyred 4 Sound Authorized Service Provider; (e) to a product or part that has been modified to significantly alter functionality or capability without the written permission of Wyred 4 Sound; (f) if any Wyred 4 Sound serial number has been removed or defaced.

TO THE EXTENT PERMITTED BY LAW, THIS WARRANTY AND REMEDIES SET FORTH ABOVE ARE EXCLUSIVE AND IN LIEU OF ALL OTHER WARRANTIES, REMEDIES AND CONDITIONS, WHETHER ORAL OR WRITTEN, STATUTORY, EXPRESS OR IMPLIED. AS PERMITTED BY APPLICABLE LAW, WYRED 4 SOUND SPECIFICALLY DISCLAIMS ANY AND ALL STATUTORY OR IMPLIED WARRANTIES, INCLUDING, AND WITHOUT LIMITATION, WARRANTIES OF MERCHANTABILITY, FITNESS FOR A PARTICULAR PURPOSE AND WARRANTIES AGAINST HIDDEN OR LATENT DEFECTS. IF WYRED 4 SOUND CANNOT LAWFULLY DISCLAIM STATUTORY OR IMPLIED WARRANTIES THEN TO THE EXTENT PERMITTED BY LAW, ALL SUCH WARRANTIES SHALL BE LIMITED IN DURATION TO THE DURATION OF THIS EXPRESS WARRANTY AND TO REPAIR OR REPLACEMENT SERVICE AS DETERMINED BY WYRED 4 SOUND IN ITS SOLE DISCRETION EXCEPT AS PROVIDED IN THIS WARRANTY AND TO THE EXTENT PERMITTED BY LAW, WYRED 4 SOUND IS NOT RESPONSIBLE FOR DIRECT, SPECIAL, INCIDENTAL OR CONSEQUENTIAL DAMAGES RESULTING FROM ANY BREACH OF WARRANTY OR CONDITION, OR UNDER ANY OTHER LEGAL THEORY, INCLUDING BUT NOT LIMITED TO LOSS OF USE; LOSS OF REVENUE; LOSS OF ACTUAL OR ANTICIPATED PROFITS (INCLUDING LOSS OF PROFITS ON CONTRACTS); LOSS OF THE USE OF MONEY; LOSS OF ANTICIPATED SAVINGS; LOSS OF BUSINESS; LOSS OF OPPORTUNITY; LOSS OF GOODWILL; LOSS OF REPUTATION; LOSS OF, DAMAGE TO OR CORRUPTION OF DATA; OR ANY INDIRECT OR CONSEQUENTIAL LOSS OR DAMAGE HOWSOEVER CAUSED INCLUDING THE REPLACEMENT OF EQUIPMENT AND PROPERTY, ANY COSTS OF RECOVERING, PROGRAMMING, OR REPRODUCING ANY PROGRAM OR DATA STORED OR USED WITH WYRED 4 SOUND PRODUCTS AND ANY FAILURE TO MAINTAIN THE CONFIDENTIALITY OF DATA STORED ON THE PRODUCT. THE FOREGOING LIMITATION SHALL NOT APPLY TO DEATH OR PERSONAL INJURY CLAIMS. WYRED 4 SOUND DISCLAIMS ANY REPRESENTATION THAT IT WILL BE ABLE TO REPAIR ANY PRODUCT UNDER THIS WARRANTY.



## Obtaining warranty service

Please access and review the resources referred to in the documentation accompanying this hardware product before requesting warranty service. If the product is still not functioning properly after making use of these resources, please contact the Wyred 4 Sound representatives or, if applicable, a Wyred 4 Sound Authorized Service Provider/dealer using the information provided on the Wyred 4 Sound website. A Wyred 4 Sound representative or Wyred 4 Sound Authorized Service Provider will help determine whether your product requires service, and if it does will inform you how Wyred 4 Sound will provide it. Wyred 4 Sound or its Wyred 4 Sound Authorized Service Providers will provide warranty service on products that are tendered or presented for service during the Warranty Period, as permitted by law. **Wyred 4 Sound is not responsible for freight charges to our facility for warranty repairs. We will cover return freight charges (domestic only) if the unit is found to be faulty and still within the warranty coverage period. You will be responsible for delivery and return shipping and handling charges if the product cannot be serviced in the country it is in.** In accordance with applicable law, Wyred 4 Sound may require that you furnish proof of purchase details and/or comply with registration requirements before receiving warranty service. Please refer to the Service page on the Wyred 4 Sound website. For more details on this and other matters on obtaining warranty service contact your dealer. Recovery and reinstallation of system and application software and user data are not covered under this Limited Warranty.

## Service

In the unlikely event there is a problem with your Wyred 4 Sound component, please contact your dealer, distributor, or Wyred 4 Sound to discuss the problem before you return the component to our manufacturing facility for repair. Products shipped to the factory will be refused and returned freight collect if not accompanied by a Wyred 4 Sound Service Department issued return authorization number (RA Number). Return authorization numbers must be prominently displayed on the outside of the box and an accompanying letter describing the problem and re-listing the RA number must be inside the box to qualify for service.

### To contact the Wyred 4 Sound Service Department:

Telephone: 805-466-9973

Hours: M/TH 7:00 am to 4:30 pm; Friday 7:00am to 11:00am PST

Fax: 805-462-8962

Email: [support@wyred4sound.com](mailto:support@wyred4sound.com)

Website: <http://www.wyred4sound.com>

### If you are located in the United States and purchased direct use the following procedure:

1. Fill out the Service form at the following address:  
<http://www.wyred4sound.com/Service.html>
2. If service is approved we will issue a Return Authorization Number (R/A number) from the Wyred 4 Sound Service Department. Be sure to confirm the current shipping address.
3. Insure and accept all liability for loss or damage to the product during shipment to the W4S facility and ensure all freight (shipping) charges are prepaid.

The product may also be hand delivered to the California facility if arrangements with the Service Department have been made in advance. Proof of purchase from an authorized Wyred 4 Sound dealer, distributor or agent will be required for warranty validation at the time of hand delivery. Use the original packaging to ensure the safe transit of the product to the factory, dealer, or distributor. **Wyred 4 Sound may, at its discretion, return a product in new packaging and bill the owner for such packaging if the product received by Wyred 4 Sound was boxed in nonstandard packaging or if the original packaging was so damaged to the point it was unusable.** If Wyred 4 Sound determines that new packaging is required, the owner will be notified before the product is returned. To purchase additional packaging, please contact your authorized Wyred 4 Sound dealer, distributor, or the Wyred 4 Sound Service Department for assistance.

**If you did not purchase the product directly from us and require service please contact your dealer or distributors' service department for information regarding service.**

If you feel your authorized dealer or distributor is either unwilling or unable to service your Wyred 4 Sound products, please contact our service department by emailing [support@wyred4sound.com](mailto:support@wyred4sound.com) or the above phone number to discuss and resolve the situation.

## **μDAC Specifications**

Max Output Level	2.5V
Frequency Response 20Hz-20kHz	±0.1db
S/N Ratio	-102db
Noise (A weighted)	13μV
Output Impedance	50Ω
THD+N (A weighted)	0.0035%
Channel Tracking	± 0.05db

# *Wyred 4 Sound*

**PH: 805-466-9973**

**Fx: 805-462-8962**

**Email: [support@wyred4sound.com](mailto:support@wyred4sound.com)**